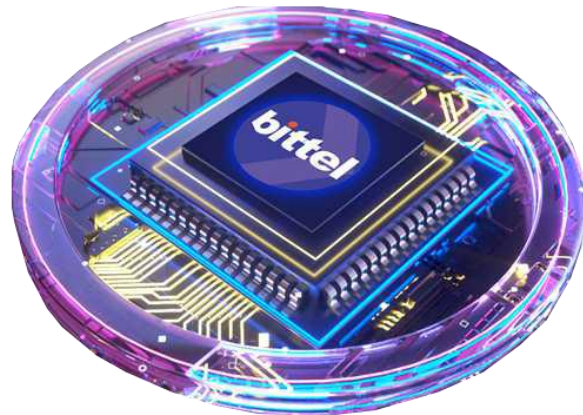
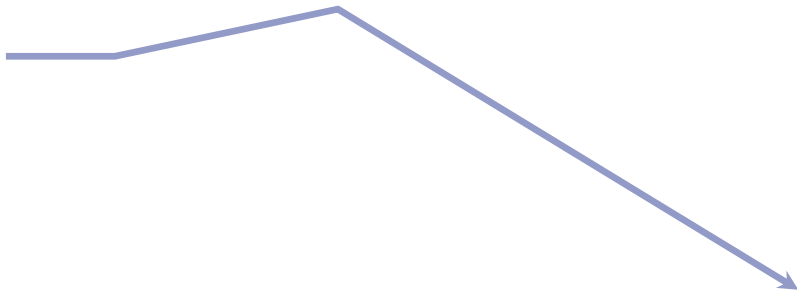




# Hotel Smart Management and Control System Solution

How to reduce energy consumption up to 50%





## **Local Energy Management Systems / EMS**

- Thermostat
- Door Magnetic Sensor

## **Networked Energy Management Systems / EMS**

- Thermostat
- Door Magnetic Sensor
- Central Segment

## **Networked Automation Systems / RMS**

- Networked Energy Savings
- Lighting Controls
- Curtains
- Guest Service System and other functionality (wired or wireless)



## Comfort and Energy Management Guestroom Thermostat

- Reduces room energy consumption by up to 50%
- Capable of controlling HVAC systems
- Features an intuitive interface
- Supports both local and networked control
- Monitors systems, conducts equipment diagnostics, and manages alarms in real-time
- Enables additional energy savings based on room status through integration with PMS (Property Management System)

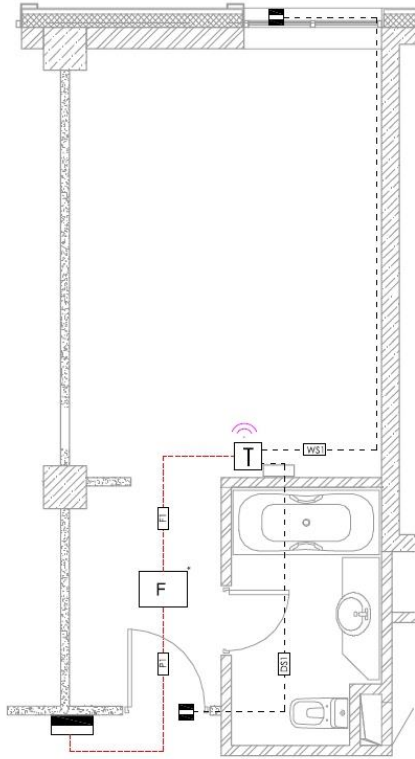
# EMS Standalone

from € 450 excl. VAT

EMS Standalone System is a high-precision guest presence detection system based on an integrated presence sensor in the thermostat and a magnetic contact door sensor, eliminating the need for outdated and inefficient keycard holders. This results in significant cost savings for the hotel.

The integrated ZigBee module in the thermostat allows for technical maintenance and system configuration changes on-site without the need to enter guest rooms.

- The thermostat, equipped with a built-in controller, power supply unit, presence sensor, and integrated Zigbee module, enables the control of Fancoil and one radiator in the hotel room's heating system.
- Magnetic contact door sensor
- Magnetic contact window sensor



# EMS Network

from € 550 excl. VAT for 150 guestrooms

In the EMS Network system, all rooms are connected through a unified network, either wired or wireless, and linked to the system's server.

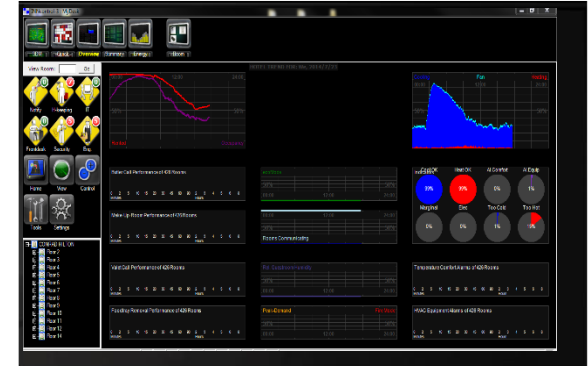
The INNcontrol 3 system software allows real-time monitoring of the system's status and offers a rich set of tools for system monitoring and management. It can also generate various reports for maintenance, performance analysis, and energy consumption calculations.

Integration with the hotel's Property Management System (PMS) significantly reduces costs and enhances security. For example, it provides indicators for:

- The room door being open for an extended period.
- Too low room temperature due to an open window during the winter (preventing radiator damage).
- Displaying guest presence status on housekeeping room screens, eliminating the need for personal guest presence checks during cleaning.

Additional components include:

- Floor gateways for room communication.
- Central server (software).

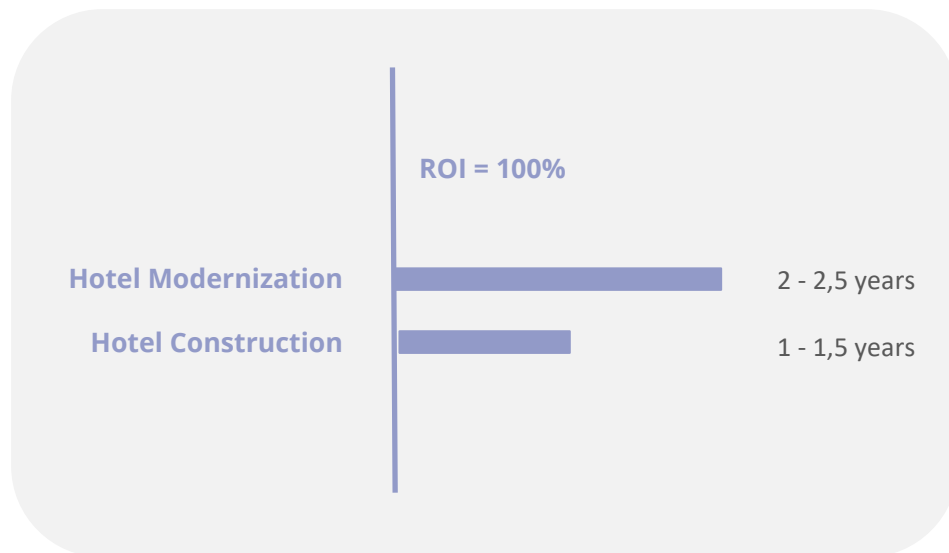


# Energy-efficient solutions for hotels

## Return of Investment

It's important to remember that when constructing a hotel property, the owner invests in equipment such as thermostats, fan coil control boards, keycard holders, and other devices, the combined cost of which **may exceed 60% of the total energy-saving system cost.**

When replacing this existing equipment with an energy-saving system, the owner not only manages their budgets more efficiently but also has the opportunity to return their investment **within 1.5 years**. In the case of modernizing an existing facility, all the mentioned equipment will need to be replaced, which will extend the payback period of the energy-saving system to **2.5 years**.





# Room Management System

Best Ways to Control Lighting & Climate



## Best Ways to Control Lighting & Climate

- Modern design
- User-friendly and ergonomic interface
- Various materials and colors
- Customizable buttons with icons
- Integration with PMS and other third-party hotel systems
- Real-time system monitoring, equipment diagnostics, and alarm management:
- Specially designed for convenient remote servicing
- Enables significant energy efficiency in hotel room management
- Data transfer capability to the hotel's external systems, including Housekeeping and BMS.





# Presence & Climate control through sensors

**Door  
units**



**HVAC  
Controls**



**Sensors  
& Contacts**



**Card  
Holders**





## Control of lighting, curtains, and other peripheral devices

**Scene  
controls**



**Bedside  
panels**

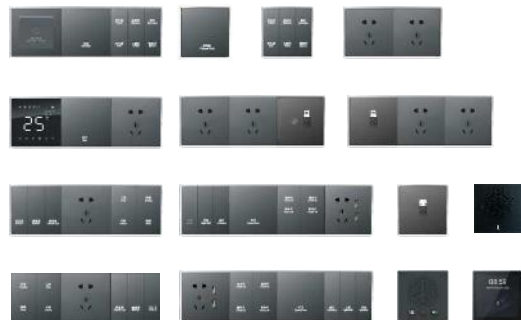


**MODA  
Media**





## HTS Switch panels



## Switches & Outlets





## D8 Large Plates (Soft Touch Metal / Plastic)





## R7 Large Plates (Aluminium)





## Bedside combinations



Unit



2-conjoined



3-conjoined



4-conjoined



Unit



2-conjoined



3-conjoined



4-conjoined



## Cardholders / Thermostats / Others

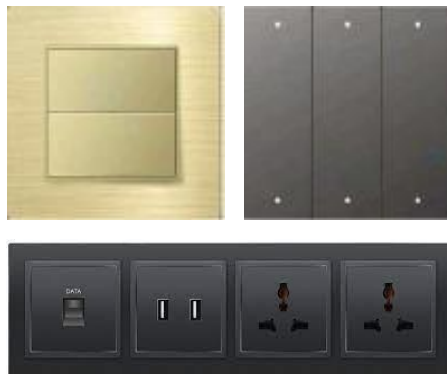




**Customizable color, shape and printings.  
Materials selectable from Aluminum and Plastic.**



**Color**



**Shape**



**Printings**





O





## Case Reference





**JW Marriott Hotel Shenzhen**



**Sheraton Manila Philippines**



**Sheraton Manila Philippines**



Xuancheng Palance Hotel Anhui,China  
Nongken Prince International Hotel Shanxi, China  
Liaoning Hotel Beijing, China  
Xiulan Hotel Baoding Hebei,China  
Zhuozhou Racecourse Baoding Hebei, China  
Sheraton Chuzhou Hotel Anhui, China  
Yihua Business Hotel Kunming, China  
New Jin Ling Hotel Nanjing, China  
Haitian Hotel Inner Mongolia, China  
Malan Flowers Sanya Hotel & Resorts, China  
Zhongda Business Hotel Linshu, China  
JSTY Hotel Shandong, China  
Yuelishanshui Hotel, China  
Wellington Hotel Zhejiang, China  
Nishihaitai Hotel Sijiqing Beijing, China  
Weiyuan Hotel Rizhao, China  
Wharfe Hotel Changde Hunan, China  
Hongtaijiaju Hotel Fuxin Liaoning, China  
Yuanyuan Hotel Tongliao, China  
Zhongxingboying Club Nanjing, China  
Shungeng Hillview Hotel Jinan, China  
Zhenjiang Procuratorate Bureau  
JW Marriott Hotel Great Wall Shenzhen, China  
Marriott Wuhan Hotel, China  
Mehood Hotel Xi'an Administration Center, China  
Vision Fashion Hotel Shenzhen, China  
H. Hotel Qingdao, China

Fiji Shangri-la  
Coral Madinah Hotel, KSA  
Sheraton Manila, Philippines  
H Hotel Fengqing Shop, Xi'an, China  
H Hotel Fengba Shop, Xi'an, China  
H Hotel Wuyi Road Shop, Xuchuang, China  
H Hotel Foreign School Shop, China  
Sanxian Home Hotel Yinchuan, China  
Mehood Hotel Ancient Cannal Shop, Wuxi, China  
Mehood Hotel Xunyang Shop, China  
Mehood Lestle Gaoxin Shop, China  
Mehood Lestle Zhonglou Shop, China  
Mehood Lestle Chuansha Shop, Shanghai  
Mehood Lestle Guangyi Shop, Wuxi, China  
Freedom Wing Hotel Puyang Shop, China  
Yitel Hotel Linyi, China  
Jinglai Hotel Chuansha Shop, Shanghai, China  
Greentree Inn Hotel Feicheng, China  
Joya Hotel Wuhan, China  
Joya Hotel Chengdu, China  
Pengcheng Hotel Xuzhou, China  
Amy couples Hotel Qingdao, China  
Changxin International Hotel & Resort, China  
S&N International Hotel Shanghai,China  
Joy Hotel Huaihua Hunan, China  
Yancheng Hotel Hunan, China  
Cloud Hotel Chongqing, China

Yushe Hotel Chongqing, China  
Road Sun Motel Zhangjiajie, China  
Shenlan Motel Yantai, China  
TONGHUA LEGEND JIANGUO HOTEL, China  
Nanjing Kending Jingpin Hotel, China  
ManXin Hotel Sanshan Street Nanjing, China  
Chinese Calligraphy Building, China  
Shennongjia Jinghe Hotel Hubei, China  
CANAL TIME HOTEL Wuxi, China  
CitiGo Hotel Jing'an Shanghai, China  
CitiGo Hotel South Luogu Lane Beijing, China  
Argyle Boutique Hotel Huzhou, China  
Wnyy Zen Hotel Wuxi, China  
Wnyy Zen Hotel Xiaoshan, China  
ManXin Hotel Shuangling Road Hangzhou, China  
Sichuan Langzhong Haoli Hotel, China  
Chongqing carreting Hotel, China  
Wuxi sphenoid flower half Hotel, China  
Hebei Handan lerthai Hotel, China  
Mehood hotel Suzhou Xietang Hotel, China  
Zibo Tanxi Mountain Cliff Hotel, China  
Suzhou bosom Wyndham San Jose Hotel, China  
Zhengzhou Yunshi Hotel, China  
Nanjing Three Mountains Manxin Hotel, China  
The Peninsula Hotel, Aden, Luoyang, China  
Taiyuan Huazhong Business Hotel, China  
Anhui Hefei king-stone Hotel, China

